

Standard Equipment

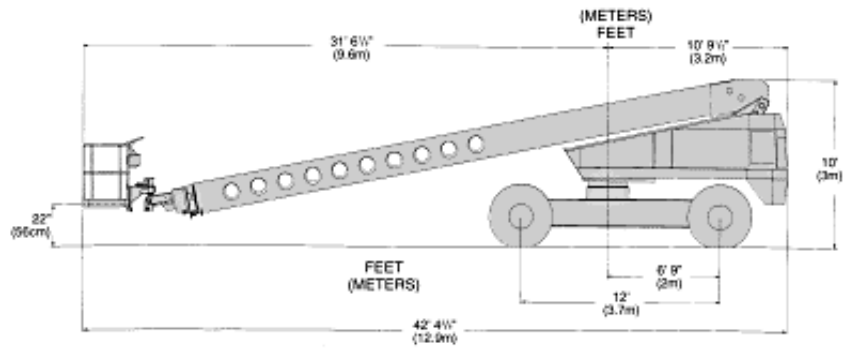
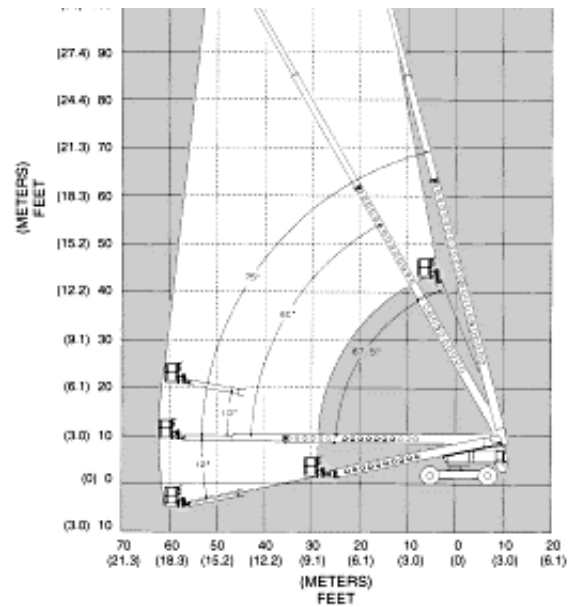
- Easily transports on conventional stepdeck trailer
- Microprocessor controlled Envelope Management System (EMS)
- Fully proportional ramp-on controls for boom lift, swing, and drive
- 165 degrees hydraulic platform rotation (90 degrees right, 75 degrees left)
- Printed circuit board with on-board LED diagnostics
- 4 wheel drive
- 4 wheel braking
- 3 speed shift-on-the-go drive
- Foam filled tires
- Hydraulically extendable rear axles
- Built-in chassis jack
- 12 volt battery operated emergency power
- Electric bleed down valve at ground and platform
- Driveable at full height
- 3-1/2 degrees tilt alarm
- 125 volt GFCI AC outlet at platform
- Aluminum upper boom
- Hour meter and ammeter
- Operator horn
- Engine anti-restart control
- Hydraulic oil level and temperature gauges
- High engine temperature and low oil pressure shut-down system
- 60 month warranty

Specifications

Working Height	126' (38.4 m)
Platform:	.
. Height	120' (36.6 m)
. Capacity	500 lbs (227 kg)
. Size	92" x 30" (234 x 76 cm)

. Construction	High strength aluminum
Boom Construction:	.
. Two Lower	Steel
. Two Upper	High strength aluminum
Boom Extension	Double acting hydraulic cylinder and dual wire rope cables
Boom Guides	Lubrication free, ultra high molecular weight polyethylene
Pivot Pin Bearings	Lubrication free, composite material
Horizontal Reach	62' (18.9 m)
. Elevation	+75 degrees / -12 degrees
Hose & Wiring Extension	Telescoping housing attached to sides of booms
Turntable Rotation	360 degrees continuous
Power Source	Gas (LP or Dual Fuel optional) or Diesel Engine
Fuel Capacity	40 US gal (151.4 L)
Hydraulic System Capacity	90 US gal (340.7 L)
Drive Speeds:	.
. High (booms stowed)	3 mph (4.8 kph)
. Middle (booms stowed)	1.5 mph (2.4 kph)
. Low (below mid elevation)	.75 mph (1.2 kph)
. Creep (beyond mid elevation)	10 fpm (3 mpm)
Gradeability	25%
Turning Radius:	.
. Inside w/axle extended	20' (6.1 m)
Height (stowed)	10' (3.0 m)
Width (stowed)	8'6" (2.6 m)
Width (axle extended)	12'10" (3.9 m)
Length (stowed)	42'4" (12.9 m)
Wheelbase	12' (3.7 m)
Tires	18" x 22.5"
. Type	Foam filled, 18 ply rating
Weight (approx.)	39,500 lbs (17,917 kg)





Optional Equipment

- Platform control box cover
- Platform work lights
- Airline to platform
- Flashing light on turntable
- Swinging gate
- Sandblast protection kit
- Driving lights
- Dual fuel or LP gas only
- Cold weather start kit
- Hydraulic system cold weather warm-up kit
- AC Generator (Hydraulic powered)
- Drive motion alarm
- Tow kit

DANGER: Models described on this page are NON-INSULATED and do not provide electrocution protection from contact with or close proximity to energized conductors which is pointed out on decals and placards attached to the machine.

Only qualified and trained operators are to be authorized to use and operate a work platform.

Aerial work platforms must be elevated only on firm, level surface.

Products in this page comply with applicable ANSI Standards. This page is for illustrative purposes only. Consult Operating/Maintenance and Parts Manuals for proper procedures. Specifications may vary and are subject to change without notice or obligation.

[TB120]

[\[Specifications Sheet\]](#)



Copyright (c) Snorkel, 1998. All Rights Reserved.
Web Site Developed by [Digital Lagoon](#).