

Standard Equipment

- 6' articulated jib boom
- Hydraulically operated self-stowing platform
- Easily transports on conventional stepdeck trailer
- Microprocessor controlled Envelope Management System (EMS)
- Fully proportional ramp-on controls
- 4 wheel drive
- 4 wheel braking
- 3 speed shift-on-the-go drive
- Hydraulically extendable rear axles
- Built in chassis jack
- 180 degrees hydraulic platform rotation
- 12 volt battery operated emergency power
- Manual bleed down valve
- Driveable at full height
- Foam filled tires
- 3 1/2 degrees tilt alarm
- 125 volt GFCI AC outlet at platform
- Aluminum alloy upper booms
- Hour meter and ammeter
- 60 month warranty

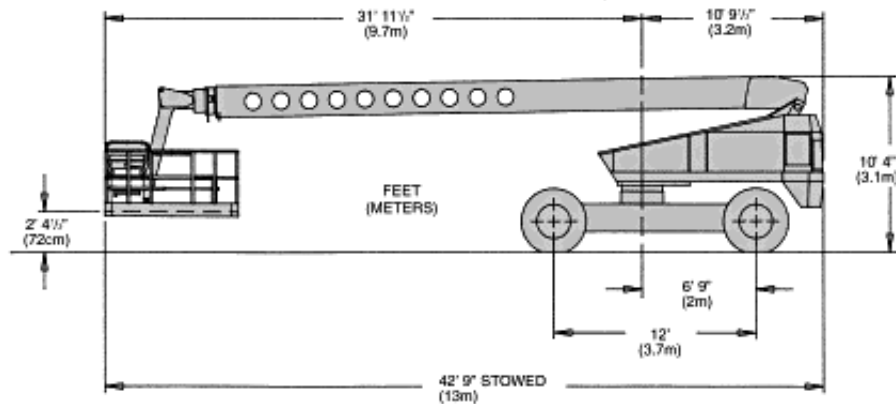
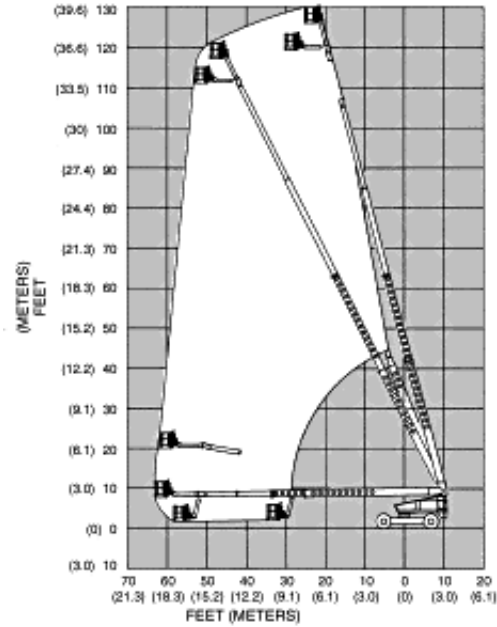
Specifications

Working Height	132' (40.2 m)
Platform:	.
• Height	126' (38.4 m)
• Capacity	500 lbs (227 kg)
• Size	30" x 92" (76 x 234 cm)
• Construction	High strength aluminum alloy
Boom Construction:	.

Two Lower	Steel
Two Upper & Jib Boom	High strength aluminum alloy
Boom Extension	Double acting hydraulic cylinder and dual wire rope cables in both upper and lower boom sections
Boom Guides	Lubrication free, ultra high molecular weight polyethylene
Pivot Pin Bearings	Lubrication free, composite material
Horizontal Reach	63' (19.2 m)
Elevation	+75 degrees / -1 degrees
Hose & Wiring Extension	Telescoping housing attached to sides of booms
Turntable Rotation	360 degrees continuous
Power Source	Gas (LP or Dual Fuel optional) or Diesel Engine
Fuel Capacity	40 US gal (151.4 L)
Hydraulic System Capacity	90 US gal (340 L)
Drive Speeds:	
High (booms stowed)	3 mph (4.83 kph)
Middle (booms stowed)	1.5 mph (2.42 kph)
Low (below mid elevation)	.75 mph (1.21 kph)
Creep (beyond mid elevation)	10 fpm (3 mpm)
Gradeability	25%
Turning Radius:	
Inside w/axle extended	20' (6.1 m)
Height (stowed)	10' 4" (3.1 m)
Width (stowed)	8' 6" (2.6 m)
Width (axle extended)	12' 10" (3.9 m)
Length (stowed)	42' 9" (13 m)
Wheelbase	12' (3.66 m)
Tires	18" x 22.5"
Type	foam filled, 18 ply rating

Weight (approx.)

41,840 lbs (18,978 kg)



Optional Equipment

- Platform control box cover
- Platform work lights
- Airline to platform
- Flashing light on turntable
- Swinging gate
- Sandblast protection kit
- Driving lights
- Dual Fuel or LP gas only
- Spark arrestor muffler (Continental only)
- Cold weather start kit
- Hydraulic system cold weather warm-up kit
- AC generator
- Drive motion alarm

- Tow kit

DANGER: Models described on this page are NON-INSULATED and do not provide electrocution protection from contact with or close proximity to energized conductors which is pointed out on decals and placards attached to the machine.

Only qualified and trained operators are to be authorized to use and operate a work platform.

Aerial work platforms must be elevated only on firm, level surface.

Products in this page comply with applicable ANSI Standards. This page is for illustrative purposes only. Consult Operating/Maintenance and Parts Manuals for proper procedures. Specifications may vary and are subject to change without notice or obligation.

[\[PRO126\]](#)

[\[Specifications Sheet\]](#)



Copyright (C) 1998 Snorkel, All Rights Reserved.
Web Site Developed by [Digital Lagoon](#).