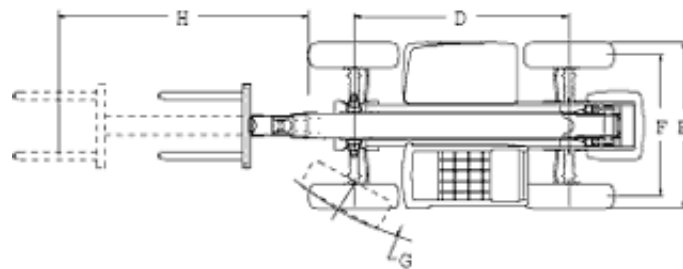
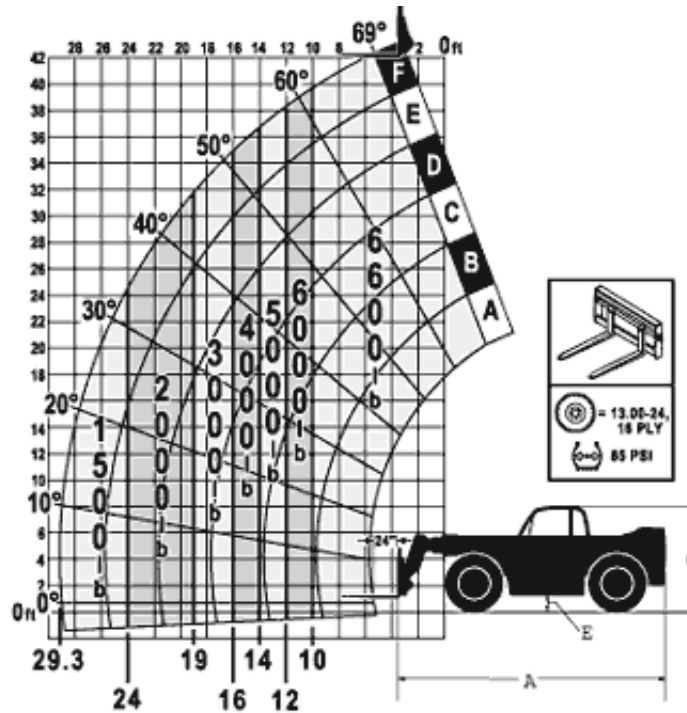


Model Info | Load Charts

Load ratings are in compliance with ASME B56.6 - 1994 stability requirements for rough terrain forklifts. Cab meets SAE J1040 ROPS and SAE J231 FOPS requirements.



Dimensions	
A. Length (less forks)	250.5" (6362.7 mm)
B. Width	98.8" (2510 mm)
C. Height	93.6" (2377 mm)
D. Wheelbase	131" (3327 mm)
E. Ground clearance	15.3" (389 mm)
F. Tread center	83.8" (2129 mm)
G. Turning clearance	147" (3734 mm)
H. Max reach from front tires to 24" (610 mm) load center	352" (8941 mm)