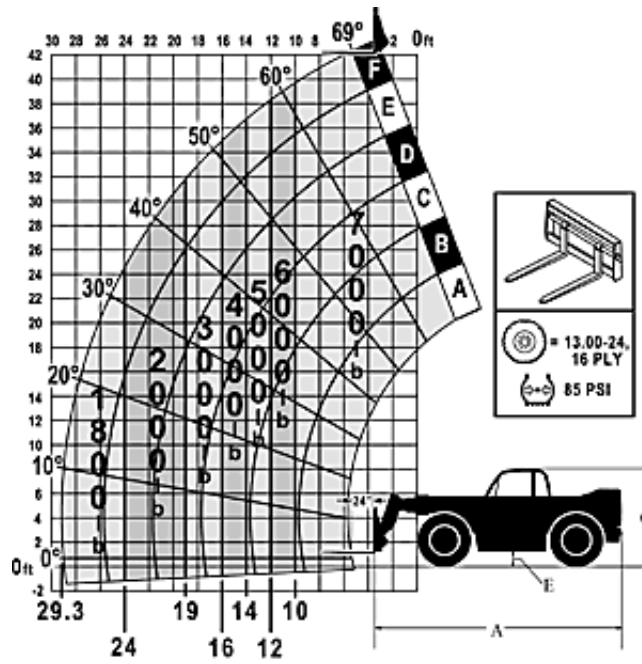


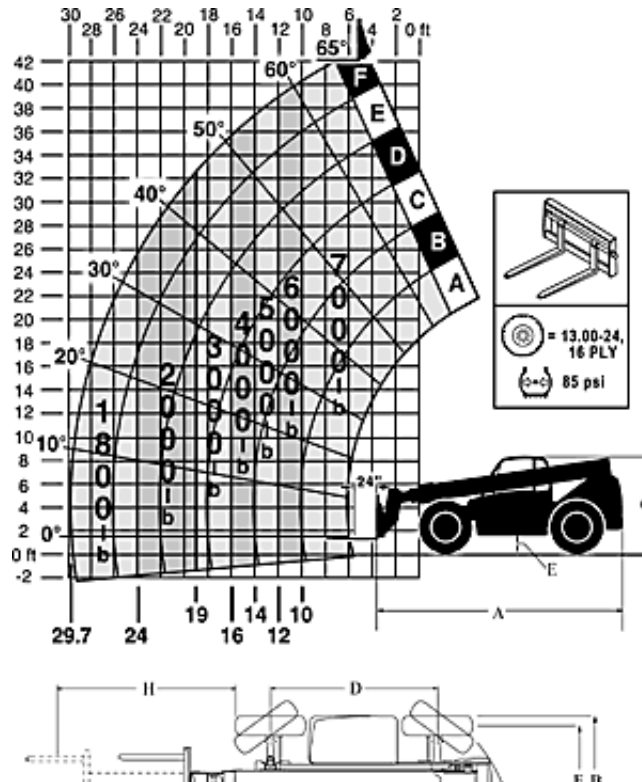
Model Info | Load Charts

Load ratings are in compliance with ASME B56.6b - 1994 stability requirements for rough terrain forklifts. Cab meets SAE J1040 ROPS and SAE J231 FOPS requirements.

Low Pivot



High Pivot





Dimensions	
A. Length (less forks)	240.0" (6091 mm)
B. Width	98.0" (2489 mm)
C. Height	93.0" (2362 mm)
D. Wheelbase	131.0" (3327 mm)
E. Ground clearance	15.3" (389 mm)
F. Tread center	84.0" (2134 mm)
G. Turning clearance	147.0" (3734 mm)
H. Max reach from front tires to 24" (610 mm) load center	29' 3" (8890 mm)