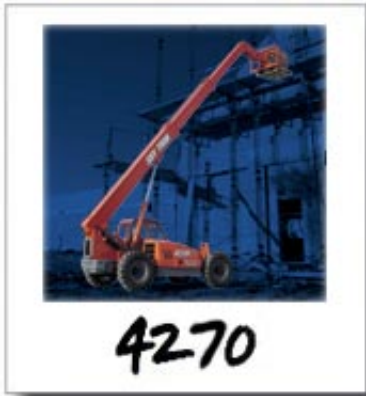


## Model Info | Load Charts

---



- **High pivot models** - provide exceptional visibility under the boom
- **Low pivot models** - provide 360° visibility over the boom
- **Higher capacity** - maximum lift capacity: 7000 lbs. (3178 kg), maximum lift height: 42'4" (12.9 m)
- **Greater maneuverability** - 147" (3734 mm) turning radius, lower overall height to clear doorways easier
- **Load sensing gear pump** - for more precise load control and horsepower to drivetrain
- **New design ROPS/FOPS cab** - roomier for greater operator comfort
- **Heavy duty ZF axles** - with hydraulically actuated inboard wet disc brakes
- **Low maintenance** - 250 hour service intervals for greater "up-time"
- **Operator convenience** - tilt steering wheel, single multi-function joystick, deluxe seat, excellent visibility, available air conditioning