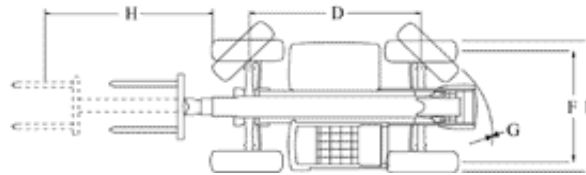
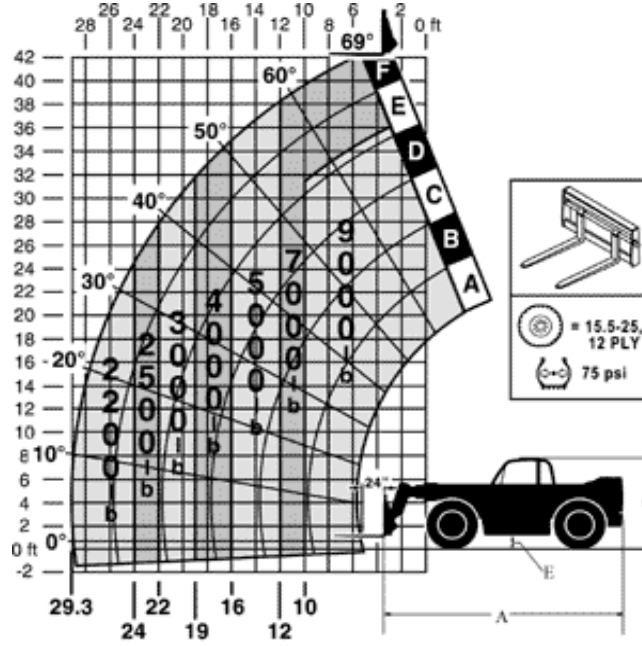


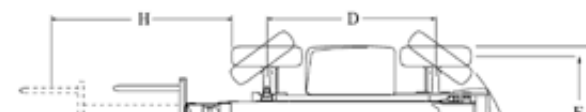
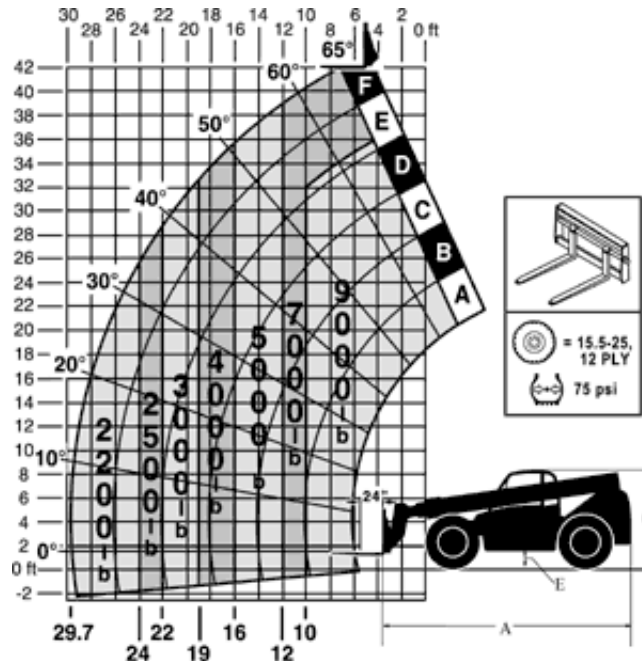
Model Info | Load Charts

Load ratings are in compliance with ASME B56.6b - 1994 stability requirements for rough terrain forklifts. Cab meets SAE J1040 ROPS and SAE J231 FOPS requirements.

Low Pivot



High Pivot





<b>Dimensions</b>	
A. Length (less forks)	245.0" (6223 mm)
B. Width	101.0" (2565 mm)
C. Height	93.0" (2362 mm)
D. Wheelbase	131.0" (3327 mm)
E. Ground clearance	15.3" (389 mm)
F. Tread center	84.0" (2134 mm)
G. Turning clearance	156.0" (3962 mm)
H. Max reach from front tires to 24" (610 mm) load center	352" (8841 mm)