

## Standard Equipment

---

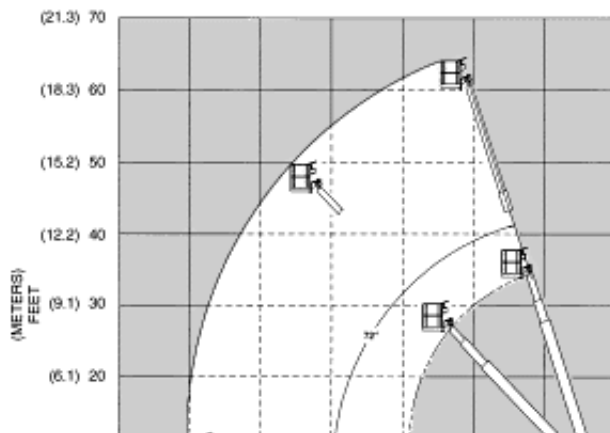
- Fully proportional ramp-on controls for boom lift, swing, and drive
- Rheostat control at ground for boom and platform functions
- Automatic braking
- 180 degrees hydraulic platform rotation
- Foam filled tires
- 12 volt battery operated emergency power
- Manual bleed down valve
- Driveable at full height
- 5 degrees tilt alarm
- 125 volt GFCI AC outlet at platform
- Aluminum telescoping booms
- Hour meter and ammeter
- Engine anti-restart control
- Hydraulic oil level and temperature gauges
- High engine temperature and low oil pressure shut-down system
- Keyed master switch
- 60 month warranty

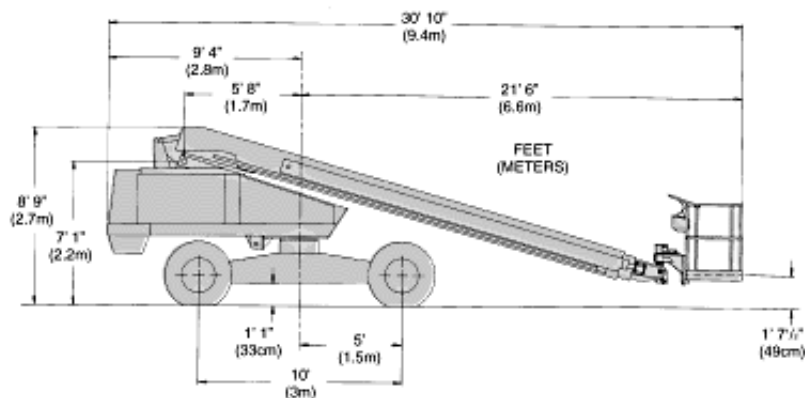
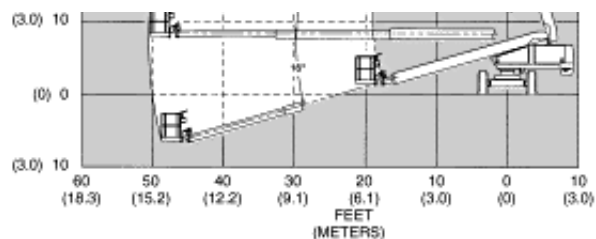
## Specifications

---

<b>Working Height</b>	66' (20.1 m)
<b>Platform:</b>	.
. <b>Height</b>	60' (18.3 m)
. <b>Capacity</b>	500 lbs (227 kg)
. <b>Size</b>	60" x 30" (152 x 76 cm)
. <b>Construction</b>	Steel
<b>Boom Construction:</b>	.
. <b>Base Boom</b>	Steel
. <b>Telescoping Booms</b>	High strength aluminum

<b>Boom Extension</b>	Double acting hydraulic cylinder and dual wire rope cables
<b>Boom Guides</b>	Lubrication free, ultra high molecular weight polyethylene
<b>Pivot Pin Bearings</b>	Lubrication free, composite material
<b>Horizontal Reach</b>	50' (15.2 m)
<b>. Elevation</b>	+72 degrees / -16 degrees
<b>Hose &amp; Wiring Extension</b>	Telescoping housing attached to sides of booms
<b>Turntable Rotation</b>	360 degrees continuous
<b>Power Source</b>	Gas (LP or Dual Fuel optional) or Diesel Engine
<b>Fuel Capacity</b>	40 US gal (151.4 L)
<b>Hydraulic System Capacity</b>	35 US gal (132.5 L)
<b>Drive Speeds:</b>	.
<b>. Booms Stowed</b>	3 mph (4.8 kph)
<b>. Booms Elevated</b>	1 mph (1.6 kph)
<b>Gradeability</b>	25%
<b>Turning Radius:</b>	.
<b>. Inside</b>	15'5" (4.7 m)
<b>Height (stowed)</b>	8'9" (2.7 m)
<b>Width</b>	8' 1/2" (2.5 m)
<b>Length (stowed)</b>	30'10" (9.4 m)
<b>Wheelbase</b>	10' (3.1 m)
<b>Tires</b>	15" x 19.5"
<b>. Type</b>	Foam filled, 12 ply rating
<b>Weight (approx.)</b>	20,700 lbs (9,389 kg)





## Optional Equipment

- Operator horn
  - Platform control box cover
  - Platform work lights
  - Airline to platform
  - Flashing light on boom
  - Swinging gate
  - Sandblast protection kit
  - Driving lights
  - Dual fuel or LP gas only
  - Spark arrestor muffler
  - Cold weather start kit
  - Hydraulic system cold weather warm-up kit
  - AC Generator (Hydraulic powered)
  - Drive motion alarm
  - Tow kit
  - Lifting lugs
  - Four wheel drive
  - Platform options
- TB 42
- 92" x 30" (234 x 76 cm) Steel (Capacity 500 lbs., 227 kg)
  - 60" x 30" (152 x 76 cm) Alum. (Capacity 660 lbs., 300 kg)
  - 92" x 30" (234 x 76 cm) Alum. (Capacity 600 lbs., 273 kg)

**DANGER:** Models described on this page are NON-INSULATED and do not provide electrocution protection from contact with or close proximity to energized conductors which is pointed out on decals and placards attached to the machine.

Only qualified and trained operators are to be authorized to use and operate a work platform.

Aerial work platforms must be elevated only on firm, level surface.

Products in this page comply with applicable ANSI Standards. This page is for illustrative purposes only. Consult Operating/Maintenance and Parts Manuals for proper procedures. Specifications may vary and are subject to change without notice or obligation.

**[TB60]**

[\[Specifications Sheet\]](#)



Copyright (C) 1998 Snorkel, All Rights Reserved.

Web Site Developed by [Digital Lagoon](#).