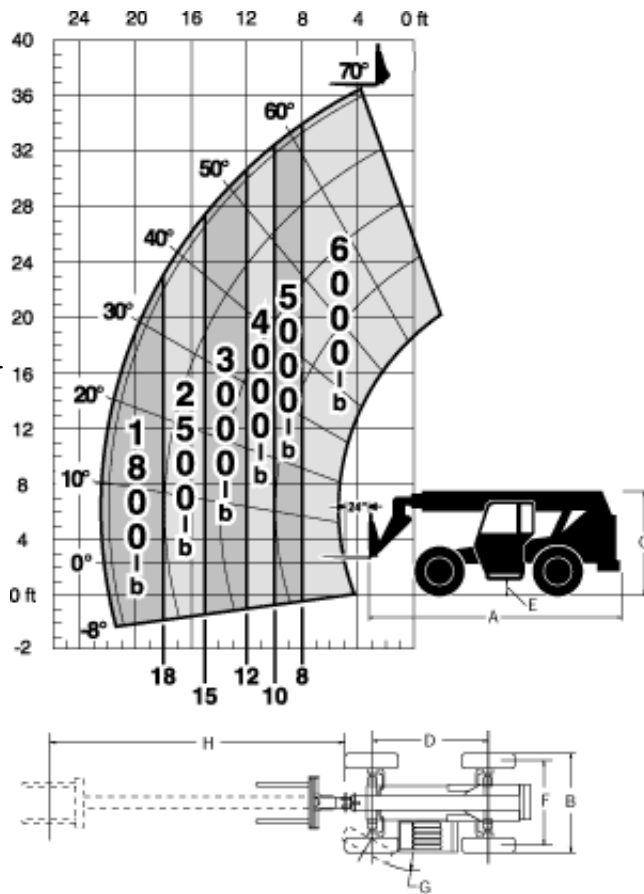


Model Info | Load Charts

Load ratings are in compliance with ASME B56.6-1992 and ASME B56.6b-1998 stability requirements for rough terrain forklifts. Cab meets ASME B56.6-1992 and ASME B56.6b-1998 ROPS/FOPS requirements.



Dimensions	
A. Length (less forks)	217" (5512 mm)
B. Width	98" (2489 mm)
C. Height	100" (2540 mm)
D. Wheelbase	113" (2870 mm)
E. Ground clearance	16.0" (406 mm)
F. Tread	84" (2134 mm)
G. Turning clearance	13' 0" (4,0 m)
H. Max reach from front tires to 24" (609 mm) load center	22' 4" (6,8 m)