

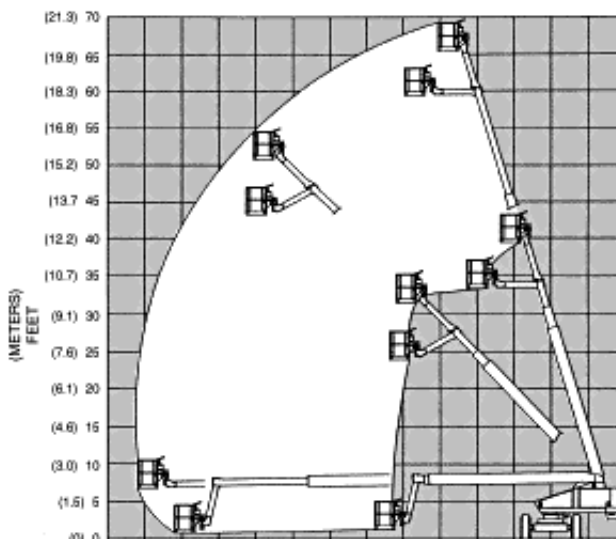
Standard Equipment

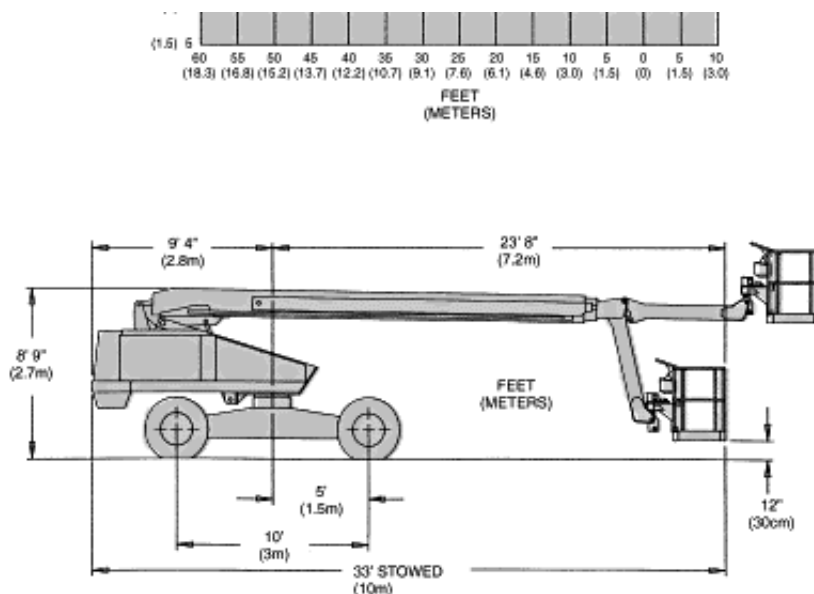
- 6' articulated jib boom
- Fully proportional ramp-on controls
- Rheostat control at ground for boom functions and platform level
- Foam filled tires
- 180 degrees hydraulic platform rotation
- 12 volt battery operated emergency power
- Manual bleed down valve
- Driveable at full height
- 5 degrees tilt alarm
- 125 volt GFCI AC outlet at platform
- Aluminum alloy telescoping booms
- Hour meter and ammeter
- 60 month warranty

Specifications

Working Height	72' (21.9 m)
Platform :	.
. Height	66' (20.1 m)
. Capacity	500 lbs (227 kg)
. Size	60" x 30" (152 x 76 cm)
. Construction	Steel
Boom Construction :	.
. Base Boom	Steel
. Telescoping & Jib Booms :	High strength aluminum alloy
Boom Extension	Double acting hydraulic cylinder and dual wire rope cables
	Lubrication free, ultra high molecular weight

Boom Guides	polyethylene
Pivot Pin Bearings	Lubrication free, composite material
Horizontal Reach	56' (17.1 m)
Elevation	+72 degrees /-1 degrees
Hose & Wiring Extension	Telescoping housing attached to sides of booms
Turntable Rotation	360 degrees continuous
Power Source	Gas (LP or Dual Fuel optional) or Diesel engine
Fuel Capacity	40 US gal (151.4 L)
Hydraulic System Capacity	35 US gal (132.5 L)
Drive Speeds:	.
Boom Stowed	3 mph (4.83 kph)
Boom Raised	1 mph (1.61 kph)
Gradeability	25%
Turning Radius:	.
Inside	15'5" (4.7 m)
Height (stowed)	8'9" (2.7 m)
Width	8'1/2" (2.5 m)
Length (stowed)	33' (10.1 m)
Wheelbase	10' (3.0 m)
Tires	15" x 19.5"
Type	Foam filled, 12 ply rating
Weight (approx.)	25,000 lbs (11,340 kg)





Optional Equipment

- Operator horn
- Platform control box cover
- Platform work lights
- Airline to platform
- Flashing light on boom
- Swinging gate
- Sandblast protection kit
- Driving lights
- Dual Fuel or LP gas only
- Spark arrestor muffler
- Cold weather start kit
- Hydraulic system cold weather warm-up kit
- AC generator
- Drive motion alarm
- Tow kit
- Lifting lugs
- Four wheel drive
- Platform options
 - 60" x 30" (152 x 76 cm) Alum. (Capacity 500 lbs., 227 kg)
 - 92" x 30" (234 x 76 cm) Alum. (Capacity 500 lbs., 227 kg)

DANGER: Models described on this page are NON-INSULATED and do not provide electrocution protection from contact with or close proximity to energized conductors which is pointed out on decals and placards attached to the machine.

Only qualified and trained operators are to be authorized to use and operate a work platform.

Aerial work platforms must be elevated only on firm, level surface.

Products in this page comply with applicable ANSI Standards. This page is for illustrative purposes only. Consult Operating/Maintenance and Parts Manuals for proper procedures. Specifications may vary and are subject to change without notice or obligation.

[[PRO66](#)]

[[Specifications Sheet](#)]



Copyright (C) 1998 Snorkel, All Rights Reserved.
Web Site Developed by [Digital Lagoon](#).